

Instructions for remapping the keyboard using KeyTweak

Note: These instructions allow a person using Windows 2000 or Windows XP to remap their keyboard; that is, the characters that are displayed when specific keys are typed will be changed. This process changes the Windows Registry. Whenever the Windows Registry is to be changed, it is a good idea to back it up to ensure that you will be able to recover your computer files in case of a malfunction. These procedures do not require manual editing of the registry; the free utility described below edits the registry for you. AVKO assumes no liability for any issues that may arise due to this procedure.

Note 2: Changing the keyboard layout (map) is a “global” change that affects the entire computer, including all users and all programs. Although it is extremely easy to go reverse the change, it does require a restart after the change has been made in the KeyTweak program.

Whereas these instructions can be used to remap any keys of the keyboard to produce any character or command for any reason, the reason for these instructions is specifically to effectively disable the Backspace key for teaching keyboarding. In learning keyboarding, it is important to build up speed and rhythm and not concentrate on making mistakes. Only after developing adequate speed and rhythm should a student attempt to really work on accuracy (after the keys are mastered). Therefore, we have given instructions on how to disable the Backspace function and replace it with an asterisk (*) symbol. This gives a visual to the student that he shouldn't backspace, but it also gives a visual clue to the teacher so they can quickly see how many (student-noticed) mistakes have been made.

To backup the Windows Registry:

1. Start > Run
2. Type “regedit” and click OK.
3. File > Export
4. Choose the location to which you'd like to save the backup registry file (.reg)

NOTE: Use a removable medium on which to save your file (e.g., flash drive, floppy disk, CD,etc.)

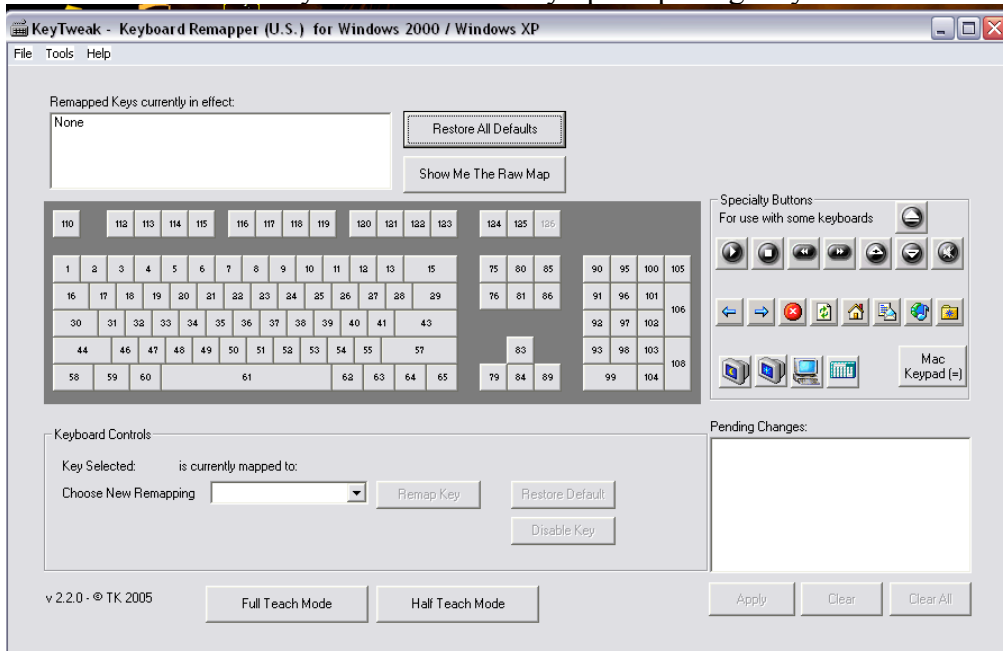
To set a System Restore Point in Windows:

1. Start > Programs > Accessories > System Tools > System Restore
2. Click “Create a Restore Point” and click Next
3. Type a name for the restore point such as “Prior to Keytweak Installation” and click Create.

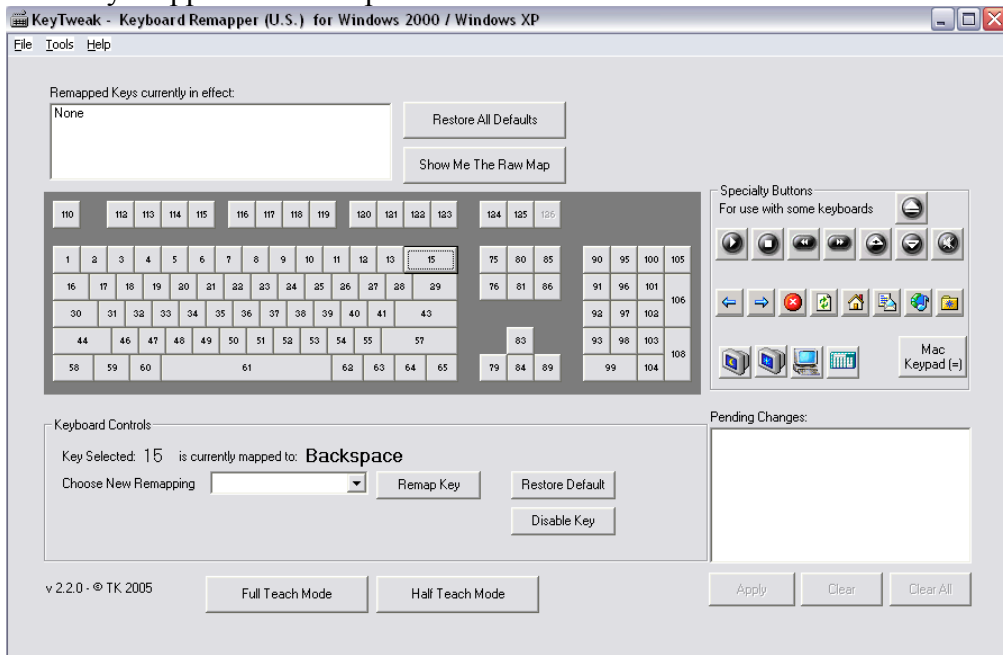
To Download and Install KeyTweak:

1. Navigate to <http://webpages.charter.net/krumsick/> in your web browser.
2. Click on Keytweak – Keyboard Remapper v2.2.0 link to install the .exe (installation) file.
3. Run the installation program, choosing where you would like to install the program.
4. Once installed, navigate to the program (Start > Programs > KeyTweak) and start it.

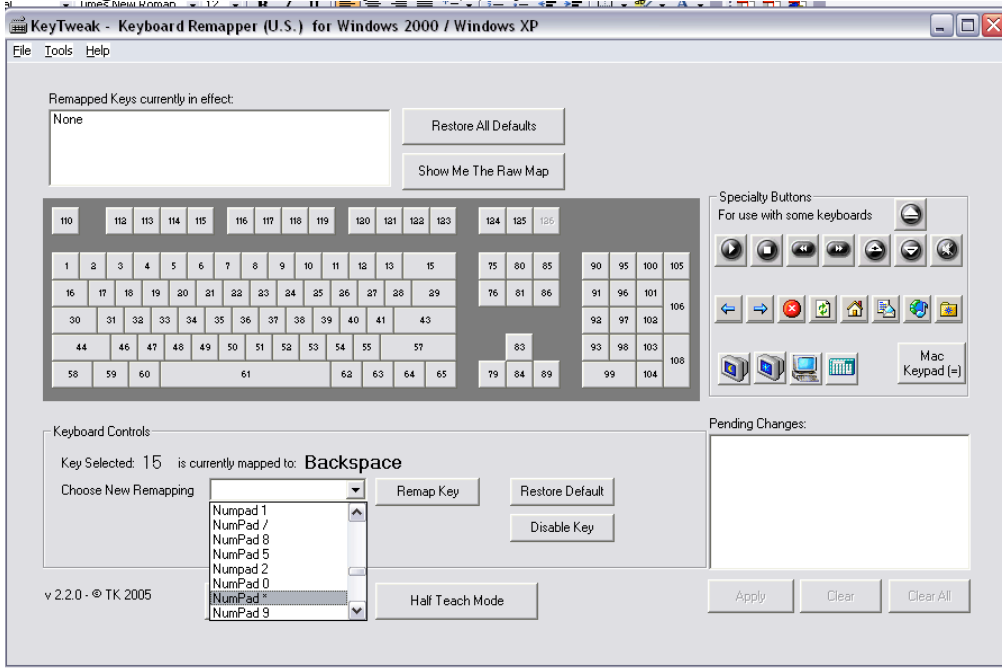
Here is the screen that you will see initially upon opening KeyTweak.



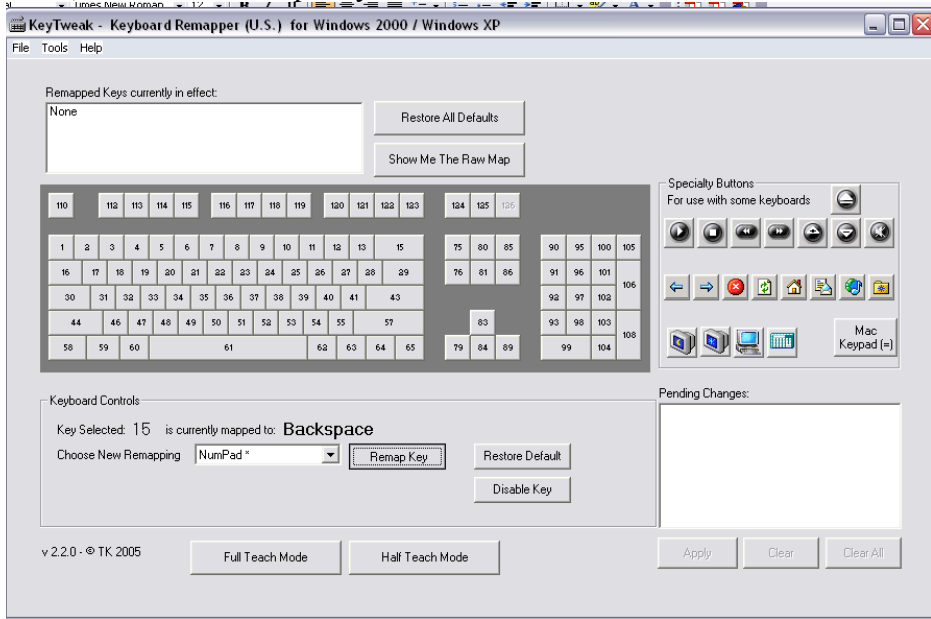
Choose the key that you'd like to change. Here, we've chosen the Delete key, shown as number "15" on the map. It will tell you which function or character that key is currently mapped to. Here, as expected, it is currently mapped to "Backspace."



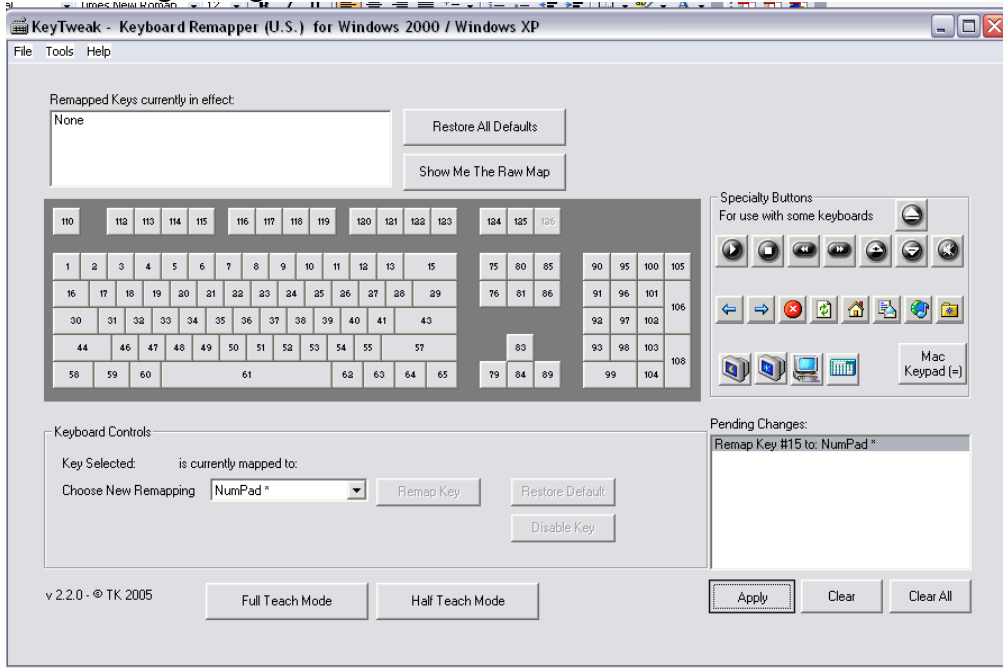
Next, choose the character / function that you'd like to change the selected key to. For this case, we are going to change it to the asterisk symbol (*) by selecting "NumPad *".



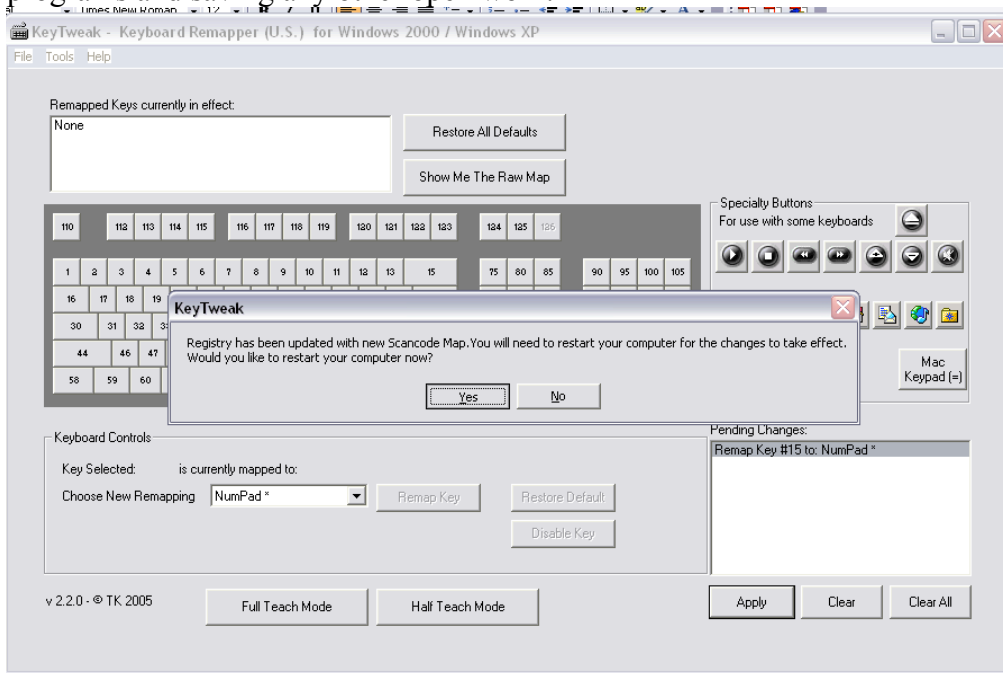
Then, click the "Remap Key" button.



After choosing a key to change, selecting the new function/character, and clicking the “Remap Key” button for all of the keys that you’d like to remap (here, we’re only change Backspace to *), click the Apply button under the “Pending Changes” box.



After changing the key map, you will be shown a dialog box telling you that you will need to restart the computer to make the changes. Restart the computer (by clicking “Yes”) after closing down any other open programs and saving any other open work.



When your computer reboots, the changes will be in effect. Happy typing!

Note: you will still be able to delete text by overwriting, use of the delete key, or using the “cut” function if necessary while the change is still in effect.

To Reverse the changes, open the KeyTweak program and click the “Restore All Defaults” button near the top of the program and restart the computer.